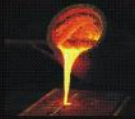


Toilet Partition



التقنيات المتعددة للصناعات الهندسية ذ.م.م
MULTI - TECH ENGINEERING INDUSTRIES L.L.C



P. o. Box: 69849
Sharjah, United Arab Emirates
Tel: +97165360003
Fax: +97165360033
Web: www.multitech.ae

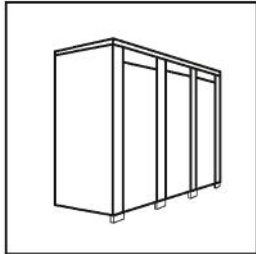
P. o. Box: 426
Postal Code: 112
Muscat, Sultanate of Oman
Tel: +968 91798111
email: multi@multitech.ae



CONTENT

- Compact Laminate Toilet Partition
- HPL Composite Toilet Partition
- Metal Honeycomb Toilet Partition
- Shower & Changing Partition
- Vanity Unit
- Urinal Partition
- Accessories Display

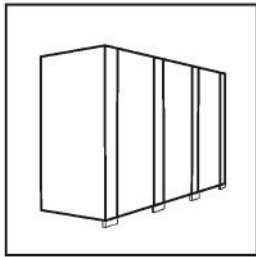
1



Head Rail Braced

This kind of series is popular among general buildings and modern buildings. Floor-installation and durable feature of embedded partition always attract many buyers from schools, research institutes and factories. Head rail mounted toilet cubicle had created one way of installation with high efficiency.

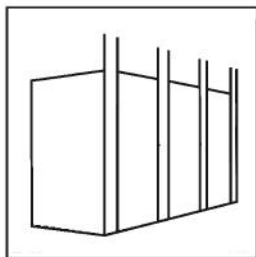
2



Floor Anchored

This design, with no head anchor, has greatly increased the possibility of decorating the other architectural elements, and so this to be come the design of choice by architects. In addition the function of the front and side panel allows excellent privacy due to the combination of height and coherent form.

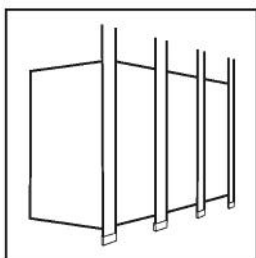
3



Ceiling Hung

The open style of this installation offers a unique blend of aesthetic and practical appeal. The absence of floor hardware provides both a clean and contemporary design that will suit many styles of decor. The unobstructed access to the floor also allows for simplified maintenance making this style especially well-suited to washrooms having wall-hung fixtures.

4



Floor to Ceiling

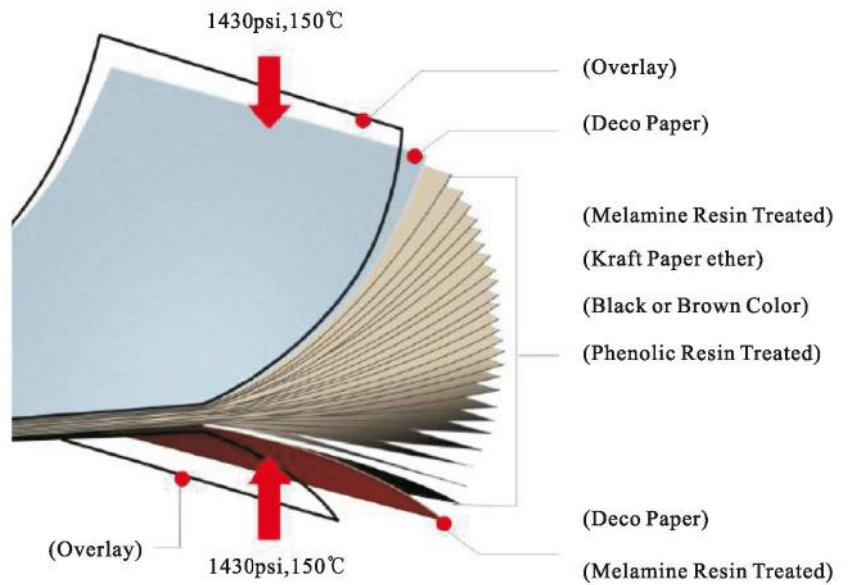
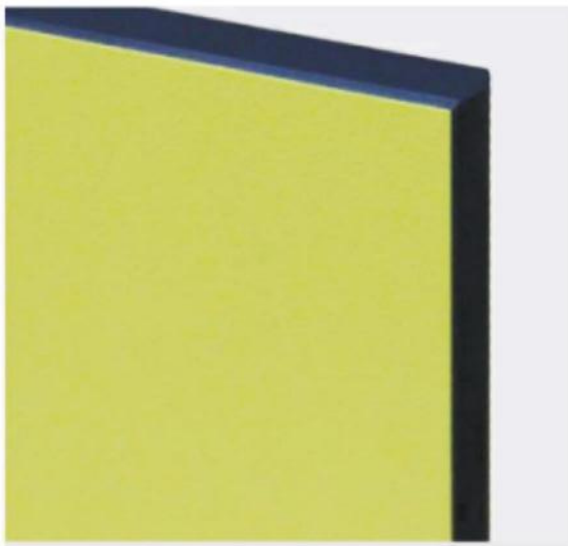
Floor-to-Ceiling style of toilet cubicle is the most optimum selection with its distinctly strength of nobleness and steadiness to those places where durable products are greatly needed.



COMPACT LAMINATE

Compact laminate board is a kind of abrasion resistant decorative panel, also called HPL. It is made of decorative colored paper that contains leaching melamine resin. In addition, stacking multi-layer black or brown kraft paper that contains phenolic aldehyde or urea-formaldehyde resin up. Then, using steel plate to suppress on the state 150 Celsius degree 1430 psi. Finally, HPL can be made. The thickness can be adjusted according to the quantity of kraft paper sheets.

Available thickness: 2mm-25mm



Sizes

1220mm × 1830mm	4' × 6'
1220mm × 2440mm	4' × 8'
1220mm × 3050mm	4' × 10'
1220mm × 3660mm	4' × 12'
1525mm × 1830mm	5' × 6'
1525mm × 2440mm	5' × 8'
1525mm × 3050mm	5' × 10'
1525mm × 3660mm	5' × 12'
1830mm × 2440mm	6' × 8'
1830mm × 1830mm	6' × 6'
1830mm × 3050mm	6' × 10'
1830mm × 3660mm	6' × 12'

Features

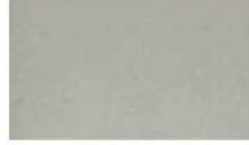
	Difficult deformation		Environmental
	Scratch resistant		Stable
	Waterproof		Easy to clean
	Fireproof		Elegant



A212041-R



A212006-R



A212064-R



A212011-R



30909-M



A212038-R



A212060-R



A21932-R



A212036-R



30232-M



A212015-R



A212033-R



3610-M



3611-M



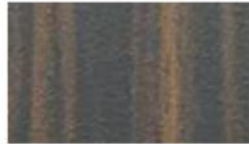
3612-M



8095-M



A222558-R



A222934-R



38834-M



38835-M



30933-Z



30231-HI



38210-Y



30845-2

For more colors, please contact with our Team.
The color is only for reference, please make the object as the standard.



30949-3



Multi-Tech Toilet Partition



PRICERITE

PRICERITE simple but stunning, available in a wide range of panel patterns and colors which are complemented with function and nylon accessories make Pricerite aesthetically pleasing yet economical to washroom construction. we will provide suitable construction solutions according to customer's quotation and plan.



Lock Front



Lock Back



L Bracket



Coat Hook



Hinge



Supporting Leg



Multi-Tech Toilet Partition



EXCLUSIF

EXCLUSIF uses particular universal hinge which passes 100,000 times test of opening and closing which proves its durability. Besides, The semi circular aluminum alloy top rail in 1.5 mm thickness are more stable and hard to stain. This series is only for 12 and 13 mm compact laminate panel.



Universal Hinge-Upper



Universal Hinge-Lower



Supporting Leg



L Bracket



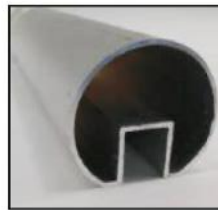
Lock Front



Lock Back



Coat Hook



1.5mm Thick Toprail



Multi-Tech Toilet Partition



REUBEN

REUBEN stands itself out with extremely heavy-duty stainless steel hardware, pilasters and side panels are firmly mounted by bold head-rail and hanging clamps to strengthen the rigidity of cubicles. From textures to appearance, from safety to comfort, every detail is designed for maximum flexibility and perfection in form to withstand even the most demanding environments



Lock Front



Lock Back



Hanging Code



Supporting Leg



Coat Hook



Hinge



Multi-Tech Toilet Partition



PARAGON

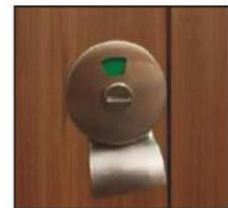
PARAGON offers a simple and elegant impression, the absence of support legs permits bright and wide indoor space, making the cleaning and maintenance easier. But the ceiling hung partition is more demanding in its installation. It is recommended for contemporary architecture where unobstructed floor surfaces is desired and a drop ceiling or open span construction can be utilized. This series is usually supplied for shopping mall and star hotels.



Coat Hook



Lock Back



Lock Front



L Bracket



Hinge



Multi-Tech Toilet Partition

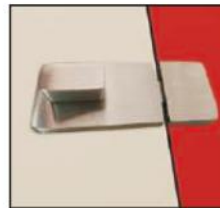


GRANDEUR

GRANDEUR are designed with hidden floor and ceiling fasteners, offering a bright and luxury design style. As the combination of HPL and stainless steel hardware, this series is commonly preferred by high use and abuse areas.



Lock Front



Lock Back



Hinge



Coat Hook



Shoe Box



Multi-Tech Toilet Partition



KIDS PARTITIONS

kids partitions offer over-lapping style doors and pilasters which increase the durability and make it easy for kids to use. Proper dimensions enable adult's supervision while fondly retaining kids' privacy. All the doors and pilasters are finishes with a comfortable half-round edge, side panels are finishes with flat edge, preventing kids from getting hurt. Available in a variety of basic and trendy colors, patterns, wood grains and digital print, kids partitions could made in shape and color as you plan, which creating endless possibilities for fun and safe washroom solutions.





Multi-Tech Toilet Partition



ALCOVE

ALCOVE is designed for toilets already have partition side walls and only in needs of doors. Alcove uses our patented designed door frame, seamlessly fastened on partition walls of both sides. The classic black or aluminum-white appearance can be matched with doors in any colors, offers a feature of stability without losing personality.



Lock Front



Lock Back



Hinge



L Bracket



Coat Hook



Door Frame



Multi-Tech Toilet Partition



POETIC

POETIC is the newest style. The combination of partitions and led lights to intuitively communicate that the toilet is occupied and so prevents embarrassment to other users. The light is controlled by lock closing and opening, and when the cubicle is occupied, it displays red. When it is free, it turns green (blue/white also available). It adopts plug-in design, which avoids the trouble of replacing the battery in the future. The low voltage supply, and hidden wires ensure the system is reliable and safe to users and cleaners alike.



Lock Front



Lock Back



Hinge



Supporting Leg



Multi-Tech Toilet Partition

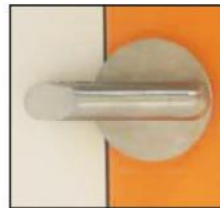


BUNDLE

BUNDLE is designed without L-Bracket. The use of U rail and F rail replace the L-Bracket in old design, making it more stable. The electroplated aluminum profile used in this series offers enhanced corrosion resistance, improved hardness, better resistant to wear and a better appearance. Support leg and door locks are made of 304 precision cast stainless steel which improves the overall durability.



Lock Front



Lock Back



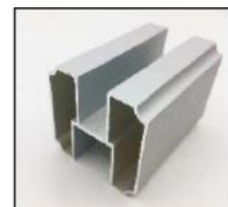
Coat Hook



Hinge



Supporting Leg



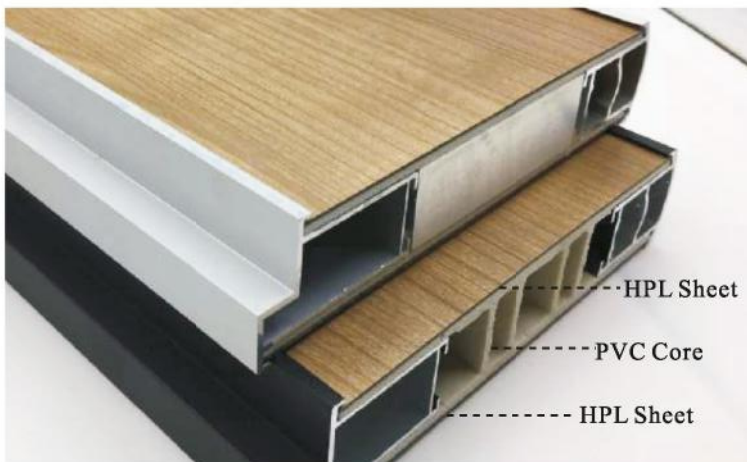
Headrail



HPL-PVC BOARD



18mm



27mm/37mm



HPL-PVC panel consisting of the facing 1mm thick HPL sheet with the inner core PVC is not only recycling and in light weight while not easy transform, but is also proved to be moistureproof, preservative, fireproof, scratch-resistant, color-steady and easy to clean, which makes it widely popularly used for toilet&shower cubicles. It is the ideal replacements of the timber, alumtimber and composite board. Available thickness:18mm,27mm,37mm.

Features



Difficult deformation



Safe



Scratch resistant



Waterproof



Environmental



Stable



Easy to clean



Elegant



HPL HONEYCOMB PANEL



HPL honeycomb board uses compact grade laminate (CGL) as baseboard, aluminum metal honeycomb as core, high quality intermediate temperate solidified glue from American and it is made of choosing processed aluminum alloy frame. The HPL honeycomb board is available for the thickness selection among 27mm and 37mm. It is luxury and a best solution to be applied in high-rise hotels and plush clubs.

Features



Difficult deformation



Environmental



Scratch resistant



Impact resistant



Safe



Stable



Fireproof



Elegant



Multi-Tech Toilet Partition



ROYAL

ROYAL is in suspended design. The specially designed rear head rail and support leg installed on side walls making the front look of toilet partition seems to be suspended in the air, which can be called “air toilet partition”. Coupled with glossy panels, simple door locks and handles, the entire bathroom looks dazzling and full of luxury, especially suitable for CBD office buildings, shopping malls and star hotels.



Lock Front



Lock Back



Universal Hinge-Upper



Universal Hinge-Lower



Headrail



Supporting Leg



Multi-Tech Toilet Partition



HORIZON

HORIZON series uses 18 mm HPL-PVC composite board, which is light, excellent in waterproof and not easy to be deformed. It is especially suitable for humid environment such as shower room and dressing room. The surface can be customized according to customers needs as HPL sheet on surface gives it a variety on color and surface effects in equivalent of compact laminate. The stainless steel accessories are electroplated black which offering enhanced corrosion resistance and a better appearance.



Lock Front



Lock Back



Hinge



Supporting Leg



Coat Hook



Multi-Tech Toilet Partition



SEDATE

SEDATE use 27mm/37mm HPL-PVC panels or HPL honeycomb panels, the edge of the panels are sealed with black or aluminum-white aluminum alloy strip. The cores are not exposed, not water, not dust. The head rail uses a 6mm x 30mm solid stainless steel plate for higher load bearing capacity and durability. Pilasters is directly grounded offering privacy well. Faced by 100 mm height stainless steel sheet attached from ground, pilasters is waterproof, moisture-proof and corrosion resistant. At the same time, it offers more aesthetic beauty.



Lock Front



Lock Back



Universal Hinge-Upper



Universal Hinge-Lower



Headrail



Multi-Tech Toilet Partition



PRIVACY

PRIVACY uses 27mm/37 mm HPL-PVC panels or HPL honeycomb panels. Designed with floor to ceiling style, this series could create the safest privacy cubicle with a fully enclosed style with a baffle above door. Under the premise of full respect for privacy, it also ensures the ventilation of the internal space.



Lock Front



Lock Back



Lock Front(37mm)



Lock Back(37mm)



Universal Hinge



Universal Hinge



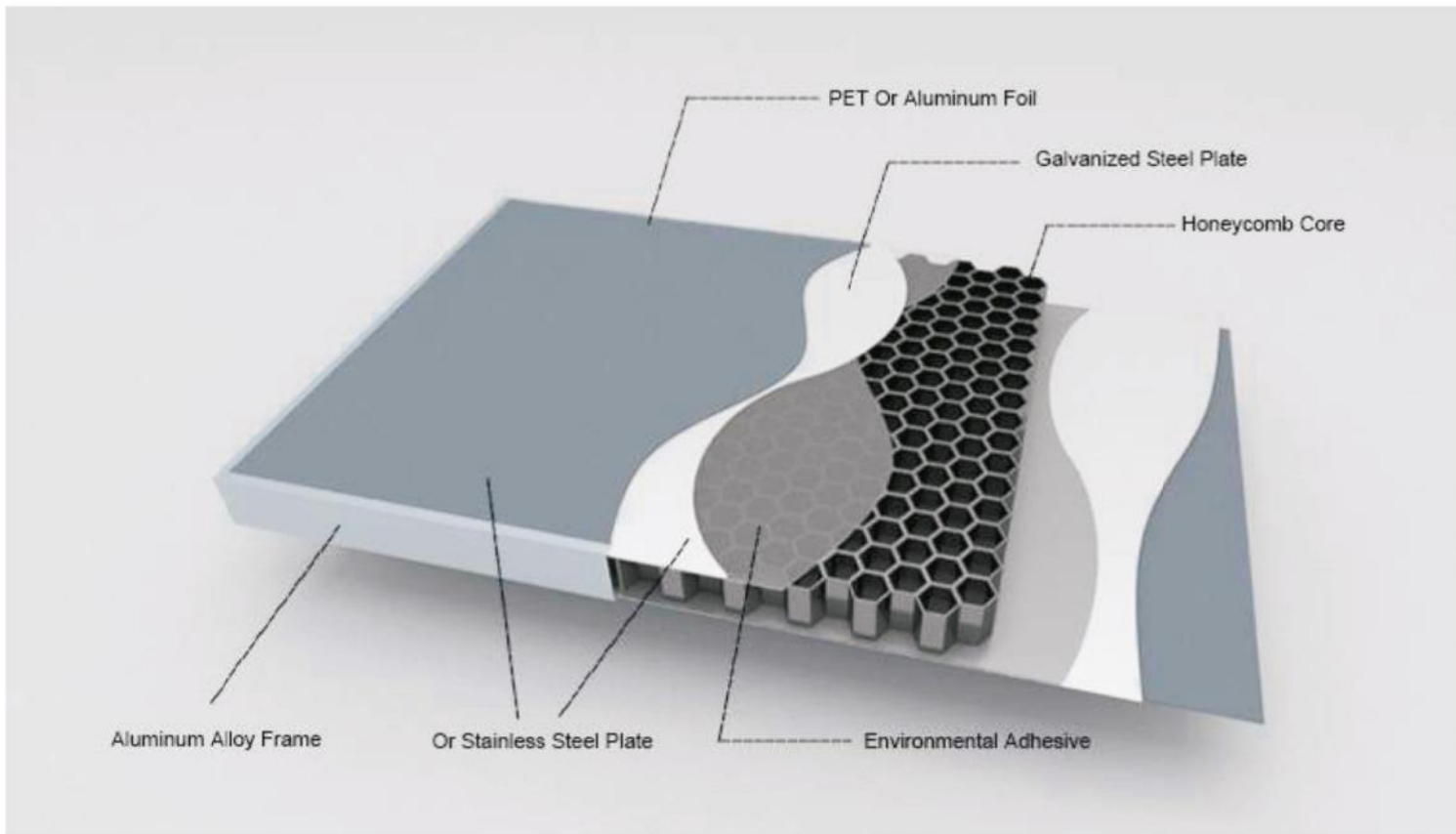
METAL HONEYCOMB PANEL



AAF

AAF metal honeycomb panel adapting the fine fluorine carbon aluminum sheet as the face, various specifications and models aluminum honeycomb as core, combining the panels with the media-temperature curing SY-24 B aviation glue, and finally choose the oxidation treatment metal panels as the baseboard to make into the metal honeycomb panel. The conception of the panel comes from the H beam construction whose face like the wing of the H beam could bear with the positive pressure, the honeycomb like the web of the H beam can bear with the shear stress.

Available thickness: 18mm, 25mm, 40mm.



Features



Difficult deformation



Environmental



Scratch resistant



Fireproof



Easy to clean



Stable



Waterproof



Elegant

For more colors, please contact with our Team.

The color is only for reference, please make the object as the standard.



2-02



2-03



2-06



2-08



2-10



2-07



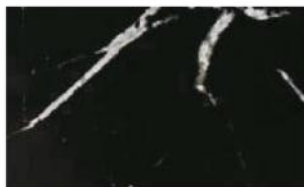
2-05



2-11



2-17



2-19



2-21



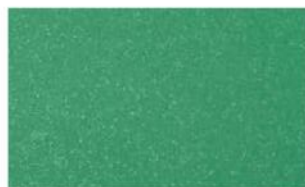
2-22



2-15



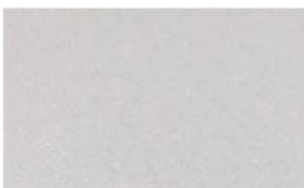
2-24



2-29



2-30



2-23



2-26



2-27(31)



2-32



Multi-Tech Toilet Partition



EVERCOLOR

Evercolor are made of (AAF) metal honeycomb panels and bonded with aluminum alloy profile. The surface is made of stainless steel or galvanized steel. Colors can be selected from metallic primary colors or various solid colors and wood grain effects of PE film deco paper. Unique hinges applied for this series improve the stability of whole cubicle. Made of metal material from panels to hardware, this series is fashionable and has a service life of up to 20 years.



Lock Front



Lock Back



Hinge



Coat Hook



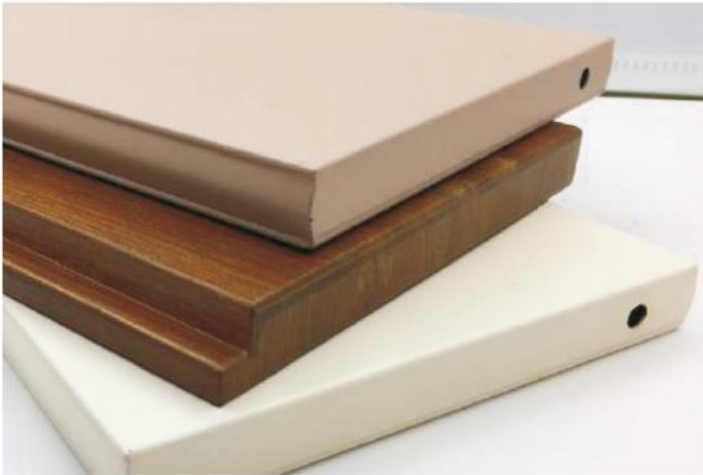
Supporting Leg



Headrail

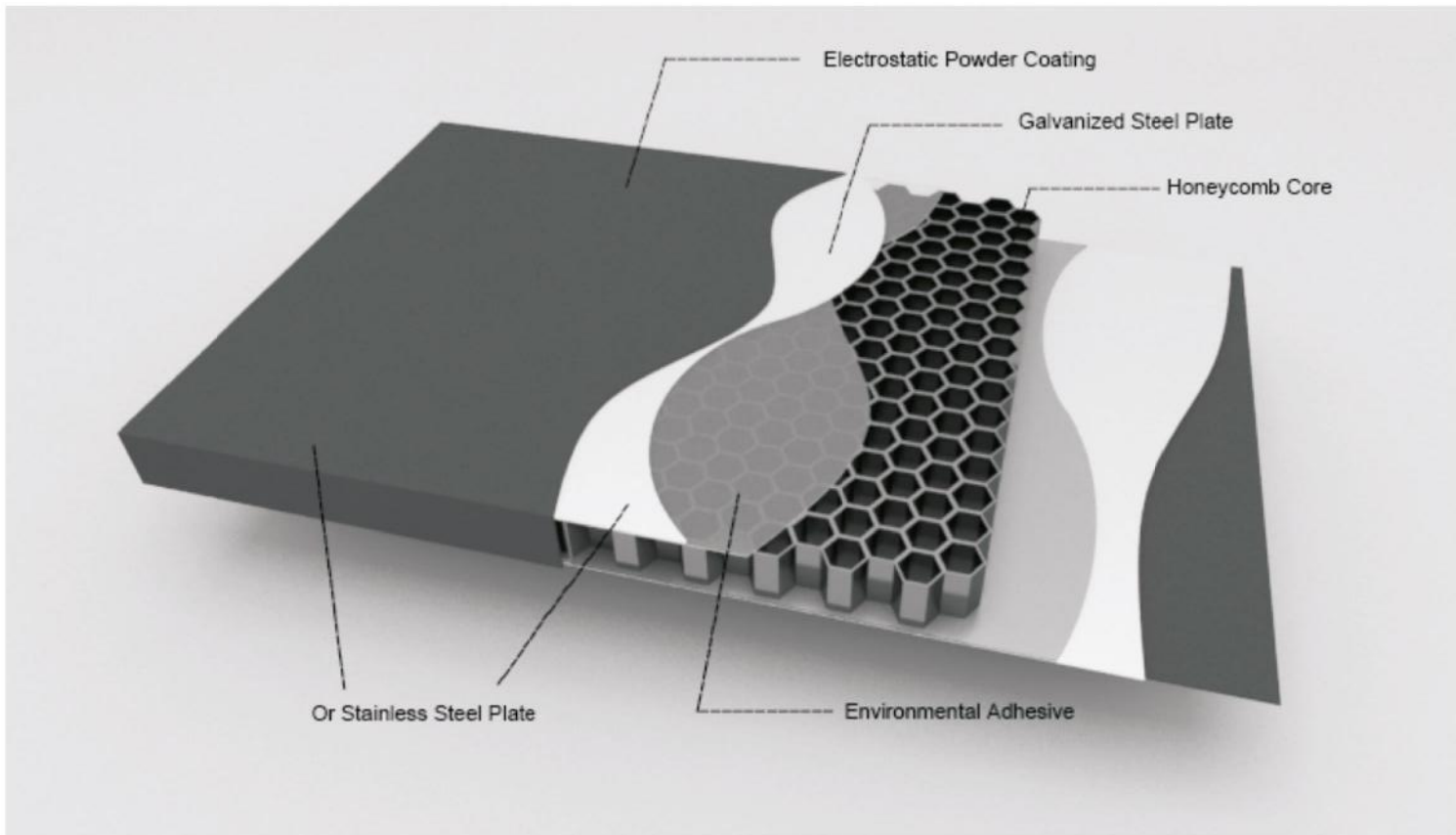


METAL HONEYCOMB PANEL



EPC

EPC Metal honeycomb panel is compounded of high-strength aerospace honeycomb core and double-sided hot dip galvanized steel plate surface, the finish can be treated with electrostatic powder coating, fluorocarbon coating and wood grain transfer. And it could also be faced with VCM film. The panel is durable, difficult deformation faded, environmental and easy to maintain. The edge has 3 types: aluminum alloy door bar, gap-free and overlapping type, which make it suitable for any occasion.



Features



Difficult deformation



Environmental



Scratch resistant



Fireproof



Easy to clean



Stable



Waterproof



Elegant

For more colors, please contact with our Team.

The color is only for reference, please make the object as the standard.



3-6413



3-9005



3-6444



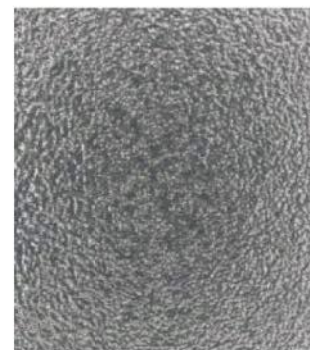
3-6413



3-6413-1



3-2848



3-7008



3-213-02



3-1068



3-6694



3-617-11



3-4168



Multi-Tech Toilet Partition



FORT

Fort is a new type of (EPC) metal honeycomb toilet partitions. Stainless steel or galvanized steel surface can be treated with electrostatic powder coating, fluorocarbon coating and wood grain transfer. It could also be faced with VCM film, so there are more colors and textures choice. It is a good choice for large public toilet partition projects for its A1 standard, acid and alkali resistance, salt spray resistance and anti-impact deformation.



Lock Front



Lock Back



Top Hinge



Bottom Hinge



Multi-Tech Toilet Partition





EPC AVAILABLE STYLES

Head Rail Braced

Ceiling Hung

Floor Anchored

Floor to Ceiling



Multi-Tech Toilet Partition





POWER COATED FINISH EPC TOILET PARTITION





Multi-Tech Toilet Partition

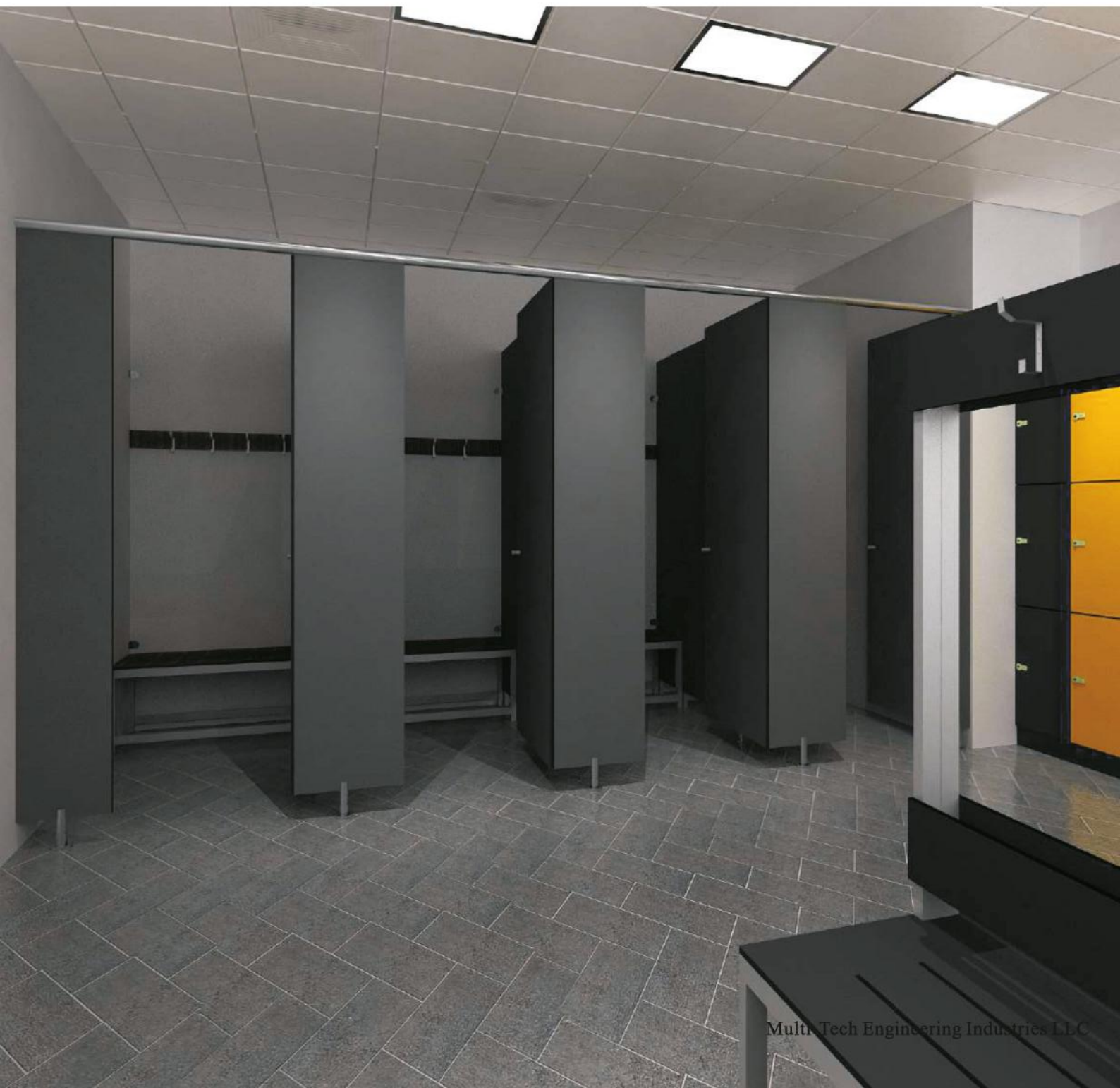


Shower Cubicle

our shower cubicles are built with longevity in mind, designed to provide the water durability required for them to withstand a constant humid environment. This ensures that your washroom provides the long-term quality for your investment.

Changing Room Cubicle

As one of the places whose environment is damp without sunshine, the changing room cubicle are required to fit in the wet conditions and stable performance. we could meet the requirements even in a higher level.





Multi-Tech Toilet Partition



Vanity Unit

our compact laminate Vanity Unit are made to meet customer's requirement, layout and field size, then combine with the construction scheme. The diversifying selection of the color can fit the toilet space design well to enhance the whole room level.





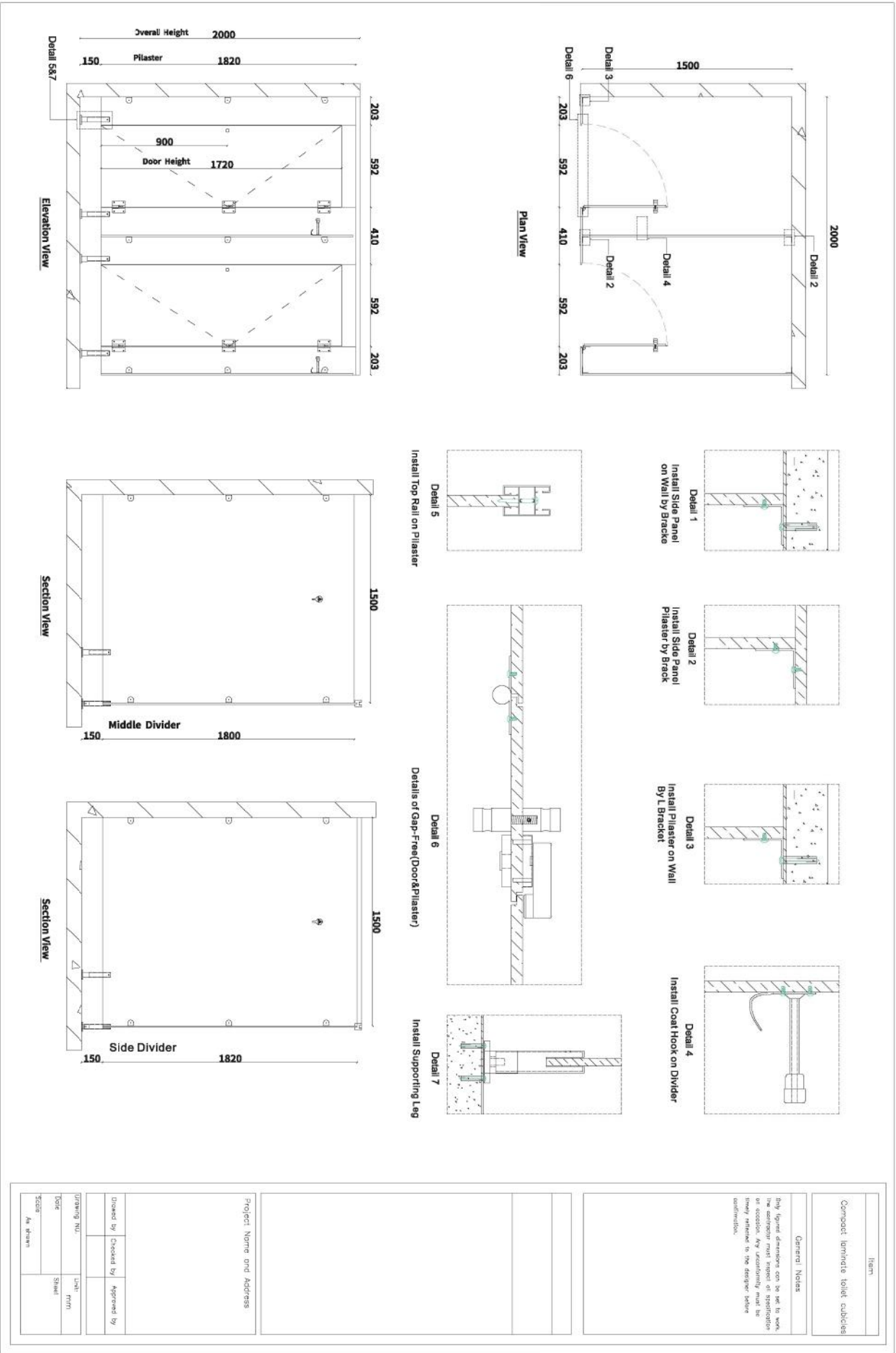
Multi-Tech Toilet Partition



Glossy HPL Urinal Partition



HPL Urinal Partition



Item	
Compact laminate toilet cubicles	

General Notes

Buy figure dimensions can be set to work. The contractor must inspect of specification or condition. Any uncertainty must be heavy referred to the designer before confirmation.

Project Name and Address

Drawn by	Checked by	Approved by
Umm	MM	MM
Scale	As drawn	



Multi-Tech Toilet Partition

Toilet Cubicle Accessories



U01



SL75



SL79



SL88



L33



AL001



SL001



123S



H75



H79



H88



9193



H66



S402A



CH33



CH88



L622



L88



L79



L256



K33



K88



TR001



TR002



TR003



SS001



UR001



UR002



FR001



hR001

