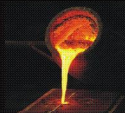
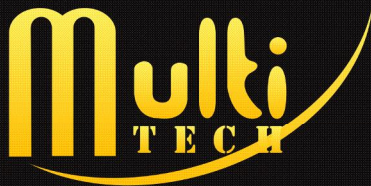


School Furniture



التقنيات المتعددة للصناعات الهندسية ذ.م.م
MULTI - TECH ENGINEERING INDUSTRIES L.L.C.

P. o. Box: 69849
Sharjah, United Arab Emirates
Tel: +97165360003
Fax: +97165360033
Web: www.multitech.ae

P. o. Box: 426
Postal Code: 112
Muscat, Sultanate of Oman
Tel: +968 91798111
email: multi@multitech.ae



Multi-Tech School Furniture





5101S handmove height adjustable desk & chair
 Desk & chair panel : ABS engineering plastic
 Desk & chair frame: 30x60x1.2mm oval tube 20x49x1.2 mm oval tube
 Backrest tube : Φ 25x1.2mm round tube



5104S handmove height adjustable desk & stool
 Desk & stool panel : 1.8cm high density fireproof board ,PP plastic injection edge
 Desk & stool frame: 30x60x1.2mm oval tube 20x49x1.2 mm oval tube
 Desk drawer : 0.8cold-pressed steel plate



5105S handmove height adjustable desk & chair
 Desk & chair panel : 1.8cm high density fireproof board ,PP plastic injection edge
 Desk & chair frame: 30x60x1.2mm oval tube 20x49x1.2 mm oval tube
 Backrest tube : 20x20x1.2mm square tube



5101K Bayonet height adjustable desk & chair
 Desk & chair panel : ABS engineering plastic
 Desk & chair frame: 30x60x1.2mm oval tube 20x49x1.2 mm oval tube
 Backrest tube : 20x40x1.2mm oval tube



5102K Bayonet height adjustable desk & chair
 Desk & chair panel : 1.8cm high density fireproof board ,PP plastic injection edge
 Desk & chair frame: 30x60x1.2mm oval tube 20x49x1.2 mm oval tube
 Backrest tube : 20x20x1.2mm square tube



5103K Bayonet height adjustable desk & chair
 Desk & chair panel : ABS engineering plastic
 Desk & chair frame: 30x60x1.2mm square tube 25x50x1.2mm square tube
 Storage basket : Φ 6mm, Φ 4mm welded steel bending



5101T Casing height adjustable desk & stool

Desk & stool panel : 1.8cm high density fireproof board ,PP plastic injection edge
 Desk & stool frame : 30x60x1.2mm oval tube 20x49x1.2 mm oval tube
 Desk drawer : 0.8 cold-pressed steel plate



5102T Casing height adjustable desk & chair

Desk panel : 1.8cm high density fireproof board,PP plastic injection edge
 Chair panel: ABS engineering plastic
 Desk & chair frame:30x60x1.2mm oval tube 20x49x1.2mm oval tube



5103T Casing height adjustable desk & chair with basket

Desk & chair panel : PE hollow blow molding
 Desk & chair frame:30x60x1.2mm oval tube 20x49x1.2 mm oval tube
 Desk drawer : 0.8 cold-pressed steel plate



5104T Casing height adjustable desk & chair

Desk & chair panel : 1.8cm high density fireproof board,PP plastic injection edge
 Desk & chair frame :30x60x1.2mm oval tube 20x49x1.2mm oval tube
 Backrest tube : 20x20x1.2mm square tube



5107T Casing height adjustable desk & chair

Desk & chair panel : ABS engineering plastic 45x60cm (desk panel)
 Desk & chair frame:30x60x1.2mm oval tube 20x49x1.2 mm oval tube
 Storage basket : Φ13mm round tube Φ4mm steel



5106G fixed desk & chair

Desk & chair panel :ABS engineering plastic
 Desk & chair frame : 20x40x1.2mm oval tube
 Storage basket :Φ4mm welded steel bending



5101G C-type fixed desk & chair

Desk & chair panel : PE hollow blow molding
 Desk & chair frame: 20x40x1.2mm square tube Φ 38x1.2 mm round tube
 Storage basket : Φ 13mm round tube Φ 4mm steel



5102G C-type fixed desk & chair

Desk panel : 1.8cm high density fireproof board, PP plastic injection edge
 Chair panel: PE hollow blow molding
 Desk & chair frame: 20x40x1.2mm oval tube



5104G Three-column fixed desks & chairs

Desk & chair panel : 1.6(1.0)cm plywood hot-press fireproof board, trimming paint
 Desk & chair frame: 15x30x1.0mm oval tube 20x40x1.0mm square tube
 Desk drawer : 0.8 cold-pressed steel plate



5105G double-column fixed desks & chairs

Desk & chair panel : 1.8cm high density fireproof board, PP plastic injection edge
 Desk & chair frame: 20x40x1.0mm oval tube
 Desk drawer : 0.8 cold-pressed steel plate



5101 one-layer double-column desks & chairs

Desk & chair panel : 1.8cm high density fireproof board, PP plastic injection edge
 Desk & chair frame: 25x54x1.0mm oval tube 20x49x1.0mm oval tube
 Desk drawer : side board 1.0mm drawer board 0.8mm



5102 double-layer double-column desks & chairs

Desk panel : 1.8cm high density fireproof board, PP plastic injection edge
 Chair panel: ABS engineering plastic
 Desk & chair frame : 20x40x1.0mm oval tube



5103-A one-layer one-column desk & stool

Desk & stool panel : 1.6(1.0)cm plywood hot-press fireproof board,trimming paint
Desk & stool frame: 20x49x1.0mm oval tube
Desk drawer:side board 1.0mm drawer board 0.7mm



5103-B one-layer one-column desk & chair

Desk & chair panel : 1.6(1.0)cm plywood hot-press fireproof board,trimming paint
Desk & chair frame: 20x49x1.0mm oval tube
Desk drawer: side board 1.0mm drawer board 0.7mm



5104-A one-layer one-column desk & stool

Desk & stool panel : 1.8cm high density fireproof board,PP plastic injection edge
Desk & stool frame: 20x49x1.0mm oval tube
Desk drawer: side board 1.0mm drawer board 0.7mm



5104-B one-layer one-column desk & chair

Desk & chair panel : 1.8cm high density fireproof board,PP plastic injection edge
Desk & chair frame: 20x49x1.0mm oval tube
Desk drawer: side board 1.0mm drawer board 0.7mm



5105-A one-layer double-column desk & stool

Desk & stool panel : 1.6(1.0)cm plywood hot-press fireproof board,trimming paint
Desk & stool frame: 20x49x1.0mm oval tube
Desk drawer: side board 1.0mm drawer board 0.7mm



5105-B one-layer double-column desk & chair

Desk & chair panel : 1.6(1.0)cm plywood hot-press fireproof board,trimming paint
Desk & chair frame: 20x49x1.0mm oval tube
Desk drawer: side board 1.0mm drawer board 0.7mm



5106-A one-layer double-column desk & stool

Desk & stool panel : 1.8cm high density fireproof board, PP plastic injection edge
 Desk & stool frame: 20x49x1.0mm oval tube
 Desk drawer: side board 1.0mm drawer board 0.7mm



5106-B one-layer double-column desk & chair

Desk & chair panel : 1.8cm high density fireproof board, PP plastic injection edge
 Desk & chair frame: 20x49x1.0mm oval tube
 Desk drawer: side board 1.0mm drawer board 0.7mm



5107-A double-layer double-column desk & stool

Desk & stool panel : 1.6(1.0)cm plywood hot-press fireproof board, trimming paint
 Desk & stool frame: 20x49x1.0mm oval tube
 Desk drawer: side board 1.0mm drawer board 0.7mm



5107-B double-layer double-column desk & chair

Desk & chair panel : 1.6(1.0)cm plywood hot-press fireproof board, trimming paint
 Desk & chair frame: 20x49x1.0mm oval tube
 Desk drawer: side board 1.0mm drawer board 0.7mm



5108-A double-layer double-column desk & stool

Desk & stool panel : 1.8cm high density fireproof board, PP plastic injection edge
 Desk & stool frame: 20x49x1.0mm oval tube
 Desk drawer: side board 1.0mm drawer board 0.7mm



5108-B double-layer one-column desk & chair

Desk & chair panel : 1.8cm high density fireproof board, PP plastic injection edge
 Desk & chair frame: 20x49x1.0mm oval tube
 Desk drawer: side board 1.0mm drawer board 0.7mm



5105T

Six-person trapezoidal combination desk & chair



5106T

Six-person curved-edge combination desk & chair

• ISO9001:2009 Quality Management System • Occupational Health & Safety Management System • Environmental Management System



5201S double-seat handmove height adjustable desk & chair
 Desk & chair panel : 1.8cm high density fireproof board ,PP plastic injection edge
 Desk & chair frame: 25x54x1.2mm oval tube 20x49x1.2 mm oval tube
 Desk drawer : 0.8 cold-pressed steel plate



5201G C-type double-seat fixe desk & chair
 Desk & chair panel : PE hollow blow molding 120x45cm
 Desk & chair frame : 330x50x1.5mm oval tube
 Storage basket :Φ6mm,Φ4mm welded steel bending



5201T double-seat casing height adjustable desk & chair
 Desk panel : 1.8cm high density fireproof board ,PP plastic injection edge
 Chair panel : ABS engineering plastic
 Desk & chair frame : 30x60x1.2mm oval tube 20x49x1.2 mm oval tube



5202T double-seat casing height adjustable desk & stool
 Desk & stool panel : 1.8cm high density fireproof board ,PP plastic injection edge
 Desk & stool frame : 30x60x1.2mm oval tube 20x49x1.2 mm oval tube
 Desk drawer : 0.8 cold-pressed steel plate



5101M Height adjustable drawing table
 Drawing board : 1.6mm high density fireproof board,
 PVC Edge
 Drawing frame : 25x54x1.2 mm oval tube
 Palette : 44x15x1.0mm cold-pressed steel plate



5102M Fliped height adjustable drawing table
 Desk & stool panel : 1.8cm high density fireproof board,
 PP plastic injection edge
 Desk frame : 30x60x1.2 mm 20x49x1.2mm oval tube
 Palette : 36x30x1.0mm cold-pressed steel plate

You can pull the drawer



5103M Multifunction studying table
 Desk & stool panel : 1.8cm high density fireproof board,
 PP plastic injection edge
 Desk frame : 30x60x1.2 mm 20x49x1.2mm oval tube
 Desk drawer :0.7 cold-pressed steel plate





5201 double-seat adjustable height desk & stool
Desk & stool panel : 1.8cm high density fireproof board,PP plastic injection edge
Desk & stool frame: 20x49x1.0mm oval tube
Desk drawer: side board 1.0mm drawer board 0.7mm



5202 double-seat adjustable height desk & chair
Desk & chair panel : 1.6(1.0)cm plywood hot-press fireproof board,trimming paint
Desk & chair frame: 20x49x1.0mm oval tube
Desk drawer: side board 1.0mm drawer board 0.7mm



5203 double-seat adjustable height desk & stool
Desk & stool panel : 1.8cm high density fireproof board,PP plastic injection edge
Desk & stool frame: 20x49x1.0mm oval tube
Desk drawer: side board 1.0mm drawer board 0.7mm



5204 double-seat adjustable height desk & chair
Desk & chair panel : 1.6(1.0)cm plywood hot-press fireproof board,trimming paint
Desk & chair frame: 20x49x1.0mm oval tube
Desk drawer: side board 1.0mm drawer board 0.7mm



5205 double-seat adjustable height desk & stool
Desk & stool panel : 1.8cm high density fireproof board,PP plastic injection edge
Desk & stool frame: 20x49x1.0mm oval tube
Desk drawer: side board 1.0mm drawer board 0.7mm



5206 double-seat adjustable height desk & chair
Desk & chair panel : 1.6(1.0)cm plywood hot-press fireproof board,trimming paint
Desk & chair frame: 20x49x1.0mm oval tube
Desk drawer: side board 1.0mm drawer board 0.7mm



502W Conjoined desk & chair

Desk & chair panel : 1.6 cm board hot-pressing fire-proof plate cover
 Desk & chair frame: Φ 32x1.2 mm round tube
 Product weight: 25Kg/Set



503W Conjoined desk & chair

Desk & stool panel : 1.6 cm particle board , melamine veneer, PVC hot melt adhesive sealing side
 Desk & stool frame: 50x25x1.2mm square pipe
 Product weight: 25Kg/Set



507W fixed desk & chair

Desk & chair panel : 1.8cm moulded board, melamine cover
 Desk & chair frame: Φ 22x1.2mm round tube Φ 16x1.2mm round tube
 Desk drawer: 0.8 cold-pressed steel plate



513W Single fixed desk & chair

Desk & stool panel : 1.6 cm multilayer plywood, fire-proof plate cover
 Desk & stool frame: 40x20x1.2mm oval tube 30x15x1.2mm oval tube
 Desk drawer: 0.8 cold-pressed steel plate



511W Folding chair

Chair panel : 1.2cm multilayer plywood, fire-proof plate cover
 Chair frame: 30x15x1.5mm oval tube
 Storage basket : Φ 4mm steel



512W The meeting chair

Chair panel : 1.4cm multilayer plywood, fire-proof plate cover
 Chair frame: Φ 25x1.2mm round tube
 Storage basket : Φ 4mm steel

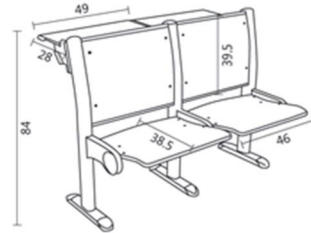


525

ladder-classroom desk & chair



Main tube : 40x80x1.5mm
 Basic tube : 2.0mm steel plate molding
 Backrest board : 1.2cm multilayer plywood/steel plate
 Writing pad : 1.8cm high density fireproof board,
 Sheath:PP plastic
 Rotary parts: Seamless welding,damping silent returned

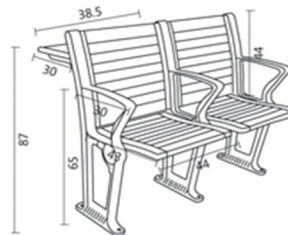


526

ladder-classroom desk & chair



Main tube : Aluminum alloy molding
 Backrest : Solid wood
 Writing pad : 1.8cm high density board or solid wood
 Rotary parts : Gravity returned





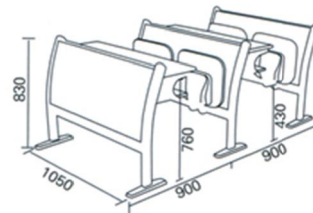
501 ladder-classroom desk & chair

Main tube : 40x80x1.5mm oval tube
 Beam tube : 40x80x1.8mm square tube
 Basic tube : 2.0mm cold-rolled steel plate
 Storage basket : 4#steel
 Backrest : 1.0mm cold-rolled steel plate
 Writing pad : 1.6mm high density hot-press fireproof board
 Seating board : 14mm multilayer plywood
 Rotary parts : spring returned



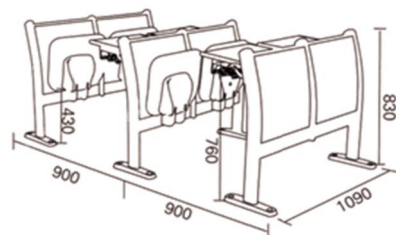
502 ladder-classroom desk & chair

Main tube : 40x80x1.5mm oval tube
 Beam tube : 40x80x2.0mm square tube
 Basic board: Cold-rolled sheet metal molding, thickness 2.0mm.
 Surface polished, acidification, phosphate and high temperature electrostatic spraying.
 Seating board : multilayer board, fireproof board covered
 Writing pad : Melamine panels or fireproof board covered
 Rotary parts : spring returned



503 ladder-classroom desk & chair

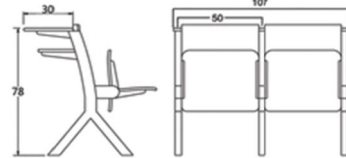
Backrest board : Hot-press molding board
 Main tube : cold-rolled steel plate
 Writing pad : desktop: fiber board, desk frame: aluminum alloy molding.
 special surface silver glitter spray metallic paint
 Storage basket : Cold-drawn steel
 Rotary parts : Gravity returned





511 ladder-classroom desk & chair

Main tube : 40x80x1.5mm oval tube
 Basic tube : 40x80x1.5mm oval tube
 Holder parts: 2.0mm cold-rolled steel plate
 Backrest board: 1.2 multilayer plywood
 Writing pad : 1.8cm high density fireproof borad
 Sheath : PP Plastic



512 ladder-classroom desk & chair



Backrest board : multilayer plywood
 Main tube : Cold-rolled steel, Surface polished, acidification, phosphate and high temperature electrostatic spraying.
 Writing pad : Melamine board,
 frame: plastic or steel
 Storage basket : Cold-drawn steel
 Rotary parts : spring returned



513 ladder-classroom desk & chair

Main tube : Aluminum molding
 Other parts : Aluminum molding
 Backrest board : 1.0mm cold-rolled plate,
 1.0cm multilayer plywood
 Chair board : 1.4cm multilayer plywood;
 Writing pad : 1.8cm high density fireproof board;

Various styles writing pad structure :





504 ladder-classroom desk & chair

Main tube : 30x70x1.5mm
 Basic tube : 2.0mm cold-rolled steel plate
 Chair panel : 1.0cm multilayer plywood
 Writing pad : 1.8cm high density fireproof board



506 ladder-classroom desk & chair

Main tube : 40x80x1.5 oval tube
 Chair panel : PE hollow blow molding
 Writing pad : 18mm melamine, fire-proof plate cover
 Holder parts : 2.0mm cold-rolled steel plate



516 ladder-classroom desk & chair

Main tube : Aluminum molding
 Backrest board : multilayer wood board, fireproof board covered
 Writing pad : melamine board, thickness 25mm, fireproof board covered
 Frame : cold-rolled plate molding
 Rotary parts : Gravity returned



517 ladder-classroom desk & chair

Main tube : Aluminum molding
 Backrest board : 12mm cold-rolled plate molding
 Writing pad : melamine board, thickness 17mm, fireproof board covered
 Storage basket : cold-drawn steel;
 Movable parts : hinged



518

ladder-classroom desk & chair

Main tube : Aluminum molding

Parts : Aluminum molding

Backrest board : Solid wood and paint

Seating board : Solid wood and paint

Writing pad : 1.8cm high density fireproof board

Various styles writing pad structure:



521 ladder-classroom desk & chair

Main tube : 30x70x1.5mm oval tube

Basic tube : 2.0mm cold-rolled steel plate

Holder parts : 2.0mm cold-rolled steel plate

Chair board : Engineering Plastics

Writing pad : 1.8cm high density fireproof board



523 ladder-classroom desk & chair

Main tube : 30x70x1.5mm

Basic tube : 2.0mm cold-rolled steel plate

Holder parts : 2.0mm cold-rolled steel plate

Chair board : 1.0cm multilayer plywood

Writing pad : 1.8cm high density fireproof board

• ISO9001:2009 Quality Management System • Occupational Health & Safety Management System • Environmental Management System



501R

Assembly hall seating



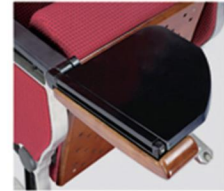
● A-type writing pad



● C-type writing pad



● B-type writing pad



● H-type writing pad



502R Assembly hall seating



503R Assembly hall seating



504R Assembly hall seating



505R Assembly hall seating



501 Teacher's podium

Size : 120x50x85cm
Material : A. Melamine covered,
B. 1.6cm multilayer hot-press fireproof board
Packaging : Carton packaging
Weight : 30Kg



503 Teacher's podium

Size : 120x60x85cm
Material : A. Melamine covered,
B. 1.6cm multilayer hot-press fireproof board
Packaging : Carton packaging
Weight : 35Kg



504 Teacher's podium

Size : 120x60x85cm
Desk panel : Melamine covered,
Desk frame : Steel
Packaging : Carton packaging
Weight : 35Kg

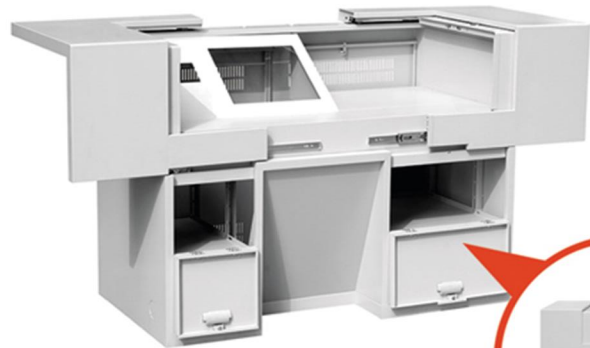


508 Multimedia podium

Size : 115x68x90cm
Desk panel : Plastic injection molding
Desk frame : 1.0 plate bending, polishing, spray
Packaging : Carton packaging



505 Multimedia podium
 Size : 140x73x85cm
 Material : 1.0mm hardcover cold-rolled steel
 Pockaging : Carton pockaging



506 Multimedia podium
 Size : 140x70x100cm
 Material : 1.0mm hardcover cold-rolled steel
 Pockaging : Carton pockaging



507 Multimedia podium
 Size : 120x70x90cm
 Material : 1.0mm hardcover cold-rolled steel
 Pockaging : Carton pockaging



503 Simple office desk
 Size : 120x60x76cm
 Desk panel : Melamine covered
 Desk frame : 30x30x1.2 square tube



501 Single-seat computer desk
 Size : 100x50x76cm
 Desk panel : 1.8mm melamine covered
 Desk frame : 1.6mm melamine covered



502 Double-seat computer desk
 Size : 160x50x76cm
 Desk panel : 1.8mm melamine covered
 Desk frame : 1.6mm melamine covered



501 Six-seat one-column reading table(stool)

Desk panel : 180x80x2.5cm high density board, fireproof board covered
Stool panel : 34x24x1.8cm multilayer plywood, fireproof board covered
Desk frame: 60x30x1.2mm oval tube 25x25x1.2 square tube
Stool frame: 20x49x1.2mm oval tube



502 Six-seat double-column reading table(Elbow chair)

Desk panel : 180x80x2.5cm high density board, fireproof board covered
Chair panel : 34x24x1.8cm multilayer plywood, fireproof board covered
Desk frame: 60x30x1.2mm oval tube 25x25x1.2mm square tube
Chair frame: Φ 22x1.2mm round tube



Table frame

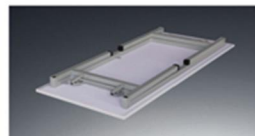


503 Reading table

Desk panel : 180x80x2.5cm high density board, fireproof board covered
Desk frame: 1.5mm Cold-rolled steel sheet by die stamping and welding
Connecting plate: 1.2mm Cold-rolled steel , punching bending and forming
Sheath : PP engineering plastic

504 Reversible reading table

Desk panel : 180x80x2.5cm high density board, fireproof board covered
Desk frame: 40x40x1.2 square tube
Sheath : PP engineering plastic
Weight : 36Kg/set





501 8-seat stainless steel dining table
 Size: 196x58x76cm
 Table panel : 0.6mm #304 stainless steel
 Stool panel : Φ 30 #304 stainless steel
 Frame : 50x50x1.0mm #201 stainless steel



502 8-seat glass-steel dining table
 Size: 200x60x76cm
 Table panel : 3.3cm glass-steel
 Chair panel : 2# glass-steel chair
 Frame : 50x50x1.2mm or 40x60x1.2mm square tube



503 8-seat reversible dining table & stool
 Size : 200x60x76cm
 Table panel : 3.3cm glass-steel 200x60cm
 Chair panel : 3.3cm glass-steel 200x20cm
 Frame : 50x50x1.2mm or 40x60x1.2mm square tube



504 8-seat reversible dining table & stool
 Size: 200x60x76cm
 Table panel : 3.3cm glass-steel 200x60cm
 Chair panel : Φ 30cm glass-steel stool
 Frame : 50x50x1.2mm or 40x60x1.2mm square tube



505 8-seat glass-steel dining table

Size : 200x60x76cm
 Table panel : 3.3cm glass-steel
 Stool panel : 3.3cm glass-steel Size : 88x20cm
 Frame : 50x50x1.2mm or 40x60x1.2mm square tube



506 8-seat glass-steel dining table

Size: 200x60x76cm
 Table panel : 3.3cm glass-steel
 Stool panel : Φ 30cm glass-steel round stool
 Frame : 50x50x1.2mm or 40x60x1.2mm square tube



507 6-seat glass-steel dining table

Size : 160x60x76cm
 Table panel : 3.3cm glass-steel
 Stool panel : Φ 30 glass-steel round stool
 Frame : 50x50x1.2mm or 40x60x1.2mm square tube



508 6-seat glass-steel dining table

Size: 160x60x76cm
 Table panel : 3.3cm glass-steel
 Stool panel : 3.3cm glass-steel
 Frame : 50x50x1.2mm or 40x60x1.2mm square tube

• ISO9001:2009 Quality Management System • Occupational Health & Safety Management System • Environmental Management System



509 4-seat glass-steel dining table

Size : 120x60x76cm
 Table & stool panel : 3.3 glass-steel
 Frame : 50x50x1.2mm or 40x60x1.2mm square tube
 Sheath : PP engineering plastic



5010 4-seat glass-steel dining table

Size: 110x60x76cm
 Table panel : 3.3mm glass-steel
 Stool panel : Φ30 glass-steel
 Frame : 50x50x1.2mm or 40x60x1.2mm square tube



511 4-seat hollow plastic dining table

Size : 115x58x76cm
 Table panel : 0.6mm #304 stainless steel
 Stool panel : PE hollow plastic (lower backrest)
 Frame : 50x50x1.2mm or 40x60x1.2mm square tube



512 4-seat fireproof board dining table

Size: 120x60x76cm
 Table panel : 2.5mm fireproof board
 Stool panel : PE hollow plastic (middle backrest)
 Frame : 50x50x1.2mm or 40x60x1.2mm square tube



513 4-seat dining table

Size : 120x60x76cm
 Table panel : 3.3cm glass-steel
 Stool panel : ABS engineering plastic
 Frame : 50x50x1.2mm Φ60x1.5mm round tube



514 4-seat wood dining table

Size: 120x70x76cm
 Table panel : 4cm wood
 Stool panel : ABS engineering plastic
 Frame : 50x50x1.2mm Φ60x1.5mm round tube



505 Bunk dormitory bed



506 Bunk dormitory bed

Size : 396x90x210cm
Main tube : $\Phi 38 \times 1.5$ mm round tube
Bed beam-column : 25x50x1.2mm square tube
Bed board : 15mm cedar board
Bed rail : $\Phi 19 \times 1.2$ mm round tube
Combined cabinet : 18mm high density medium fiber board



507 Bunk dormitory bed

Size : 445x90x210cm
Main tube : $\Phi 38 \times 1.5$ mm round tube
Bed beam-column : 25x50x1.2mm square tube
Bed board : 15mm cedar board
Bed rail : $\Phi 19 \times 1.2$ mm round tube
Combined cabinet : 18mm high density medium fiber board



508 Bunk dormitory bed

Size : 396x80x210cm
Main tube : $\Phi 38 \times 1.5$ mm round tube
Bed beam-column : 25x50x1.2mm square tube
Bed board : 15mm cedar board
Bed rail : $\Phi 19 \times 1.2$ mm round tube
Combined cabinet : 18mm high density medium fiber board

• ISO9001:2009 Quality Management System • Occupational Health & Safety Management System • Environmental Management System



509 Bunk dormitory bed



510 Bunk dormitory bed

Size :396X90x180cm
Main tube : Φ 38x1.5mm round tube
Bed beam-column : 40X40x4mm triangle steel
Bed board :15mm cedar board
Bed rail : Φ 19x1.2mm round tube



511 Dormitory bed

Size :200X90x80cm
Main tube : Φ 38x1.5mm round tube
Bed beam-column : 40X40x4mm triangle steel
Bed board :15mm cedar board



512 Bunk dormitory bed

Size :200X90x240cm
Main tube : Φ 38x1.5mm round tube
Bed beam-column : 40X40x4mm triangle steel
Bed board :15mm cedar board
Shoe rack : Φ 19x1.0mm round tube



514 Bunk dormitory bed

Size :200X90x180cm
Main tube : Φ 38x1.5mm round tube
Bed beam-column : 40X40x4mm triangle steel
Bed board :15mm cedar board
Shoe rack : Φ 13x1.0mm round tube



515 Bunk dormitory bed

Size :200X90x180cm
Main tube : Φ 38x1.5mm round tube
Bed beam-column : 40X40x4mm triangle steel
Bed board :15mm cedar board
Shoe rack : Φ 19x1.2mm round tube



516 Bunk dormitory bed

Size :200X90x180cm
Main tube : Φ 38x1.5mm round tube
Bed beam-column : 40X40x4mm triangle steel
Bed board :15mm cedar board
Bed rail : Φ 19x1.2mm round tube



Type : 001
Name : Double-column Bookshelf
Size : 90x45x200cm



Type : 003
Name : Bool Handtruck
Size : 62x40x85cm



Type : 002
Name : Double-column Bookshelf
Size : 90x45x200cm



Type : 004
Name : Book ladder
Size : 49x45x124cm

• ISO9001:2009 Quality Management System • Occupational Health & Safety Management System • Environmental Management System



Type : 005
Name : Magazine shelf
Size : 90x35x180cm



Type : 006
Name : Magazine shelf
Size : 90x35x180cm



Type : 007
Name : Magazine shelf
Size : 90x35x180cm



Type : 008
Name : File cabinets
Size : 86x39x180cm



Type : 009
Name : File cabinets
Size : 86x39x180cm



Type : 010
Name : File cabinets
Size : 86x39x180cm



Type : 011
Name : File cabinets
Size : 86x39x180cm



Type : 012
Name : 6-wardrobe
Size : 90x42x180cm



Type : 013
Name : 8-wardrobe
Size : 90x42x180cm



Type : 014
Name : 9-wardrobe
Size : 90x42x180cm



Type : 015
Name : 12-wardrobe
Size : 90x36x180cm